

Assembling the System

Table Installation Assistance

Optical tables are heavy. Even a small table top weighs over 500 pounds (227 Kg). Newport maintains national list of qualified equipment movers who can install your Vibration Control System at minimal risk to your personnel or equipment. Contact Newport or your local sales representative for help in preparing your facility.

Positioning the Isolators

Figure 1 shows the correct isolator positions for standard table sizes. Table 1 shows the correct dimensions (A, B, & C) for each table size.

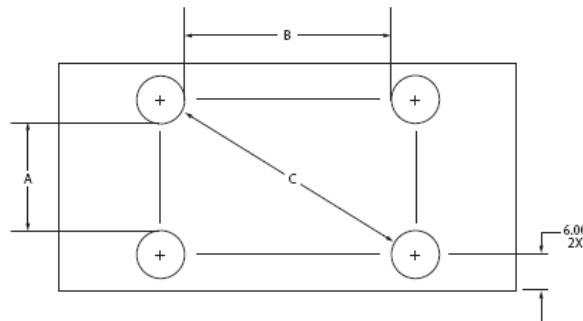


Figure 1 — Isolator Position

Table Width ft (mm)	Table Length ft (mm)	A in (mm)	B in (mm)	C in (mm)
3 (900)	6 (1800)	14 (341)	30 (733)	35.5 (899)
3 (900)	8 (2400)	14 (341)	42 (1028)	47.25 (1159)
3 (900)	10 (3000)	14 (341)	56 (1374)	60.25 (1479)
4 (1200)	6 (1800)	14 (341)	30 (733)	43.75 (1079)
4 (1200)	8 (2400)	26 (641)	42 (1028)	52.25 (1310)
4 (1200)	10 (3000)	26 (641)	56 (1374)	65.25 (1604)
4 (1200)	12 (3600)	26 (641)	70 (1720)	77.75 (1914)
4 (1200)	14 (4200)	26 (641)	84 (2166)	90.75 (2326)
4 (1200)	16 (4800)	26 (641)	94 (2311)	100 (2463)
5 (1500)	6 (1800)	38 (941)	30 (733)	51.75 (1296)
5 (1500)	8 (2400)	38 (941)	42 (1028)	60 (1499)
5 (1500)	10 (3000)	38 (941)	56 (1374)	71 (1766)
5 (1500)	12 (3600)	38 (941)	70 (1720)	82.75 (2054)
5 (1500)	14 (4200)	38 (941)	84 (2166)	95 (2445)
5 (1500)	16 (4800)	38 (941)	94 (2311)	104.25 (2576)

Table 1 — Isolator Positions

Table Installation Assistance

WARNING

Table tops are heavy! Use forklift or other appropriate equipment. Be sure to use proper lifting procedures to avoid severe personal injury.

- A. With the isolators located as described, raise the table top and position it above the isolators. Be sure each isolator is centered within the tapped three-hole pattern on the lower surface of the table (Figure 2).

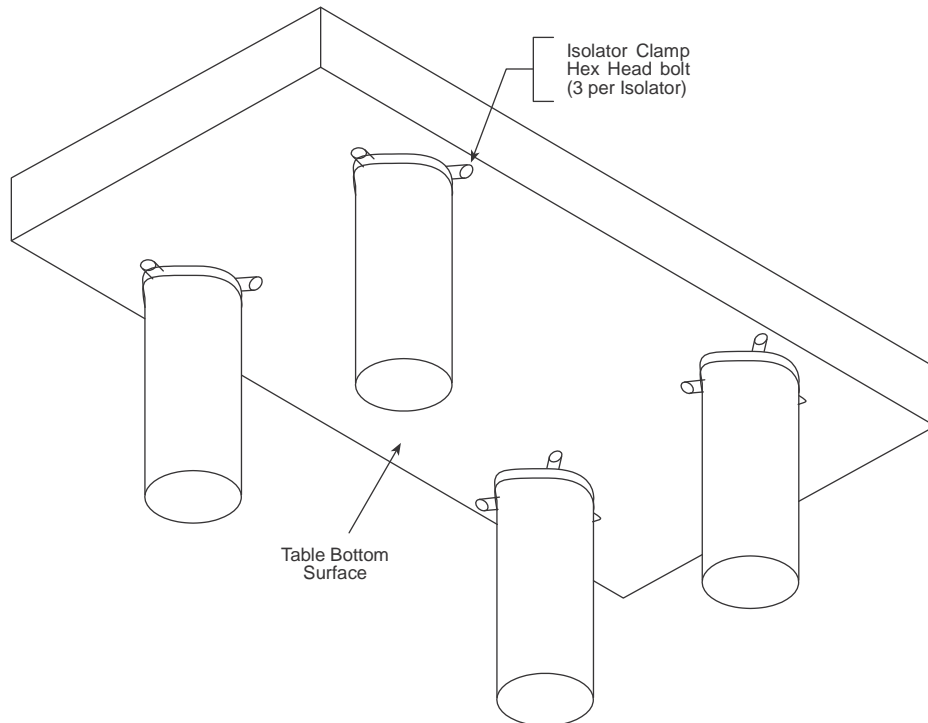


Figure 2 – Isolator Clamps and Mounting Holes

- B. Gently lower the table so that it is just above the top of isolators.
- C. Install three isolator clamps in the corners where each isolator is located (figures 1 & 2). Loosely secure the clamps with the bolts. Do not tighten the clamps at this time.
- D. Lower the table top until it rests on the isolator support plates.

Installing the Table Top For RL Lab Legs:

Use the following procedure to level the table. The special wrench (Figure 3) is for all adjustments.

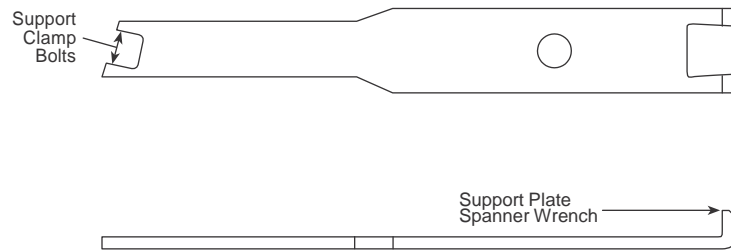


Figure 3 – Isolator Leveling Wrench

- A. Refer to Figure 4. Insert the prongs of the wrench into the holes on the bottom of the support plate. Rotate the plate using the wrench to adjust the height.
- B. Place the level on top of the table.
- C. For each isolator, adjust the support plates as required to bring the table to a level condition. Be sure to check the level using both the length and width axes of the table.

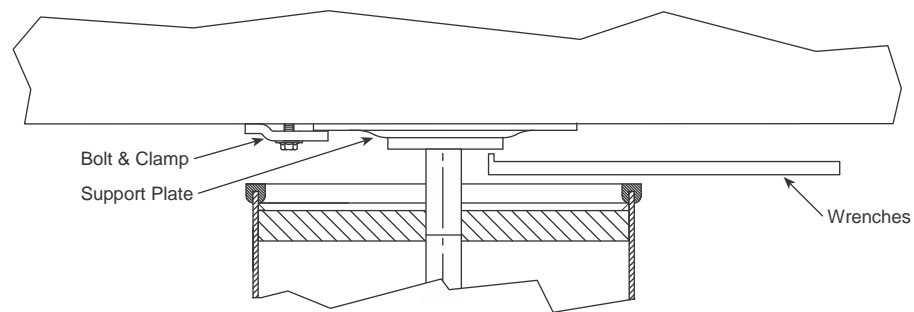


Figure 4 – Level Adjustment of Isolators

- D. When the table is completely level, ensure by eye that every isolator support plate is snug against the table bottom.
- E. Use the level to confirm that the table top is still level and equally supported by all isolator support plates. Tighten all isolator clamp bolts snugly to secure the table to the isolators.

Installing the Table Top For SL Lab Legs:

Use the following procedure to level the table.

- A. Place the level on the top plate.
- B. For each isolator, adjust the support plates as required by adding air to the isolator to bring the table to a level condition. Be sure to check the level using both the length and width axes of the table.

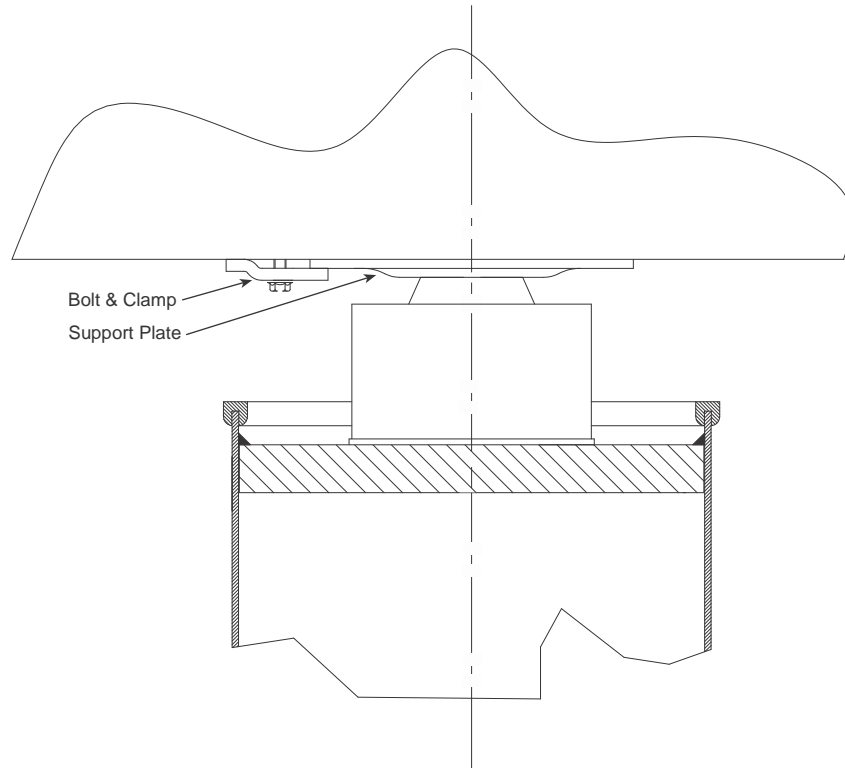


Figure 5 – Level Adjustment of Isolators

- C. When the table is completely level, ensure by eye that every isolator support plate is snug against the table bottom.
- D. Use the level to confirm that the table top is still level and equally supported by all isolator support plates. Tighten all isolator clamp bolts snugly to secure the table to the isolators.

P/N 28845-01, Rev.C
IN-05997, (02-00)

Corporate Headquarters
Newport Corporation
1791 Deere Avenue
Irvine, CA 92606
Telephone: (949) 863-3144
Facsimile: (949) 253-1800

Visit Newport Online at www.newport.com

Printed in the USA



Newport®