

Intelligent Open-Loop Picomotor™ Controller/Driver Module – 4 Channels



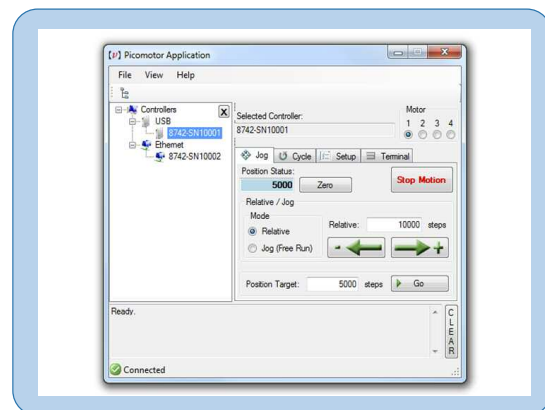
The model 8742 is a 4-axis open-loop intelligent motion controller/driver that provides a compact and low cost solution for driving New Focus open-loop Picomotor products.

It is a single-box solution that can be computer controlled via USB and Ethernet communication interfaces using Newport Motion Control Language (NMCL) command set. Both interfaces are well supported via Windows™ DLL, sample LabVIEW™ VIs, and intuitive graphical user interface (GUI) Windows™ application with device auto-discovery feature.

Each model 8742 controller/driver can control one of four 4-pin RJ-22 single output ports for use with any single-channel Picomotor actuator at any given time. The model 8725 multi-axis adapter can be used to connect the 4-pin RJ-22 output ports on the drivers to New Focus Picomotor products with 6-pin RJ-11 connectors.

Model 8742 Picomotor Controller / Driver Features:

- Intelligent 4-axis open-loop control
- Compact, integrated controller and driver design
- Innovative Picomotor auto-detection technology
- Plug-and-play USB 2.0 communication
- Advanced 10/100 Ethernet connectivity (Sockets interface, TCP/IP, DHCP, UDP)
- Embedded dynamic HTTP server
- Easy to use Windows™ application with advanced device auto-discovery
- LabVIEW™ and Windows™ DLL support
- Newport Motion Control Language (NMCL) command set
- Local ON/OFF Power switch
- CE and ROHS compliant



Intelligent Open-Loop Picomotor™ Controller/Driver Module – 4 Channels

Picomotor™ Controller / Driver Specifications

Specifications	8742
Number of Channels	4
Maximum Pulse Rate	Up to 2 kHz
Input Voltage (VDC)	12 (Nominal), 10.5 to 14.5
Interface	10/100 Ethernet, USB 2.0
Power Consumption	11 Watts @ 2 kHz Sustained Speed, 2 Watts Idle
Size	5.45 in x 3.61 in x 1.02 in (148.3 mm x 91.7 mm x 25.8 mm)
Operating Temperature	0°C to 65°C
Storage Temperature	-40°C to 95°C
Weight	0.6 lb (272 g)

Ordering Information

8742-4-KIT	Four-Axis 8742 Picomotor Controller/Driver Kit
8745-PS	Power Supply, 8742 Controller/Driver, 12V
8745-PWR-CBL	Power Cable, 6 in. Length, 8742 Controller/Driver
8745-USB-CBL	USB Cable, 3 Meters Length, 8742 Controller/Driver
8745-STK-KIT	L-Shaped Stacking Plate Kit, 8742 Controller/Driver
8745-MTG-KIT	Optical Table Mounting Plate Kit, 8742 Controller/Driver



3635 Peterson Way, Santa Clara, CA 95054, USA

PHONE: 1-800-222-6440 1-408-980-4300 FAX: 1-408-919-6083 EMAIL: sales@newfocus.com

www.newport.com/newfocus

	PHONE	EMAIL		PHONE	EMAIL
Belgium	+32-(0)0800-11 257	belgium@newport.com	Irvine, CA, USA	+1-800-222-6440	sales@newport.com
China	+86-10-6267-0065	china@newport.com	Netherlands	+31-(0)30 6592111	netherlands@newport.com
France	+33-(0)1-60-91-68-68	france@newport.com	United Kingdom	+44-1235-432-710	uk@newport.com
Japan	+81-3-3794-5511	spectra-physics@splasers.co.jp	Germany / Austria / Switzerland	+49-(0)6151-708-0	germany@newport.com
Taiwan	+886 -(0)2-2508-4977	sales@newport.com.tw			

Newport Corporation, Irvine, California and Franklin, Massachusetts; Evry and Beaune-La-Rolande, France and Wuxi, China have all been certified compliant with ISO 9001 by the British Standards Institution. Santa Clara, California is DNV certified.

Newport Corporation, Global Headquarters
1791 Deere Avenue, Irvine, CA 92606, USA

PHONE: 1-800-222-6440 1-949-863-3144
EMAIL: sales@newport.com

Complete listings for all global office locations are available online at www.newport.com/contact

DS-111201