

- Reduces space by combining the filter and the regulator into one unit
- Wide variation of filtration and regulating pressures to fit most applications
- Modular design connects with other SMC Air Preparation Equipment



NAW2000-N02BG-C

**Specifications**

Model	NAW1000	NAW2000	NAW3000	NAW4000	NAW4000-N06
Port Size NPT	M5x0.8	1/8 • 1/4	1/4 • 3/8	1/4• 3/8• 1/2	3/4
Proof pressure psig (MPa)			220 (1.5)		
Max. oper. pressure psig (MPa)			150 (1.0)		
Regulating pressure range psig (MPa)	7~100 (0.05~0.7)		7~120 (0.05 ~ 0.85)		
Port size pressure gauge	1/16Rc(PT)	1/8 NPT	1/8 NPT	1/4 NPT	1/4 NPT
Ambient and fluid temperature		23° ~ 140° F (-5° ~ 60° C)			
Filtration			5µm		
Bowl capacity ozs. (cm³)	.08 (2.5)	.27 (8)	.78 (23)	1.52 (45)	1.52 (45)
Bowl material			Polycarbonate		
Construction/regulator			Relieving Type		
Weight lbs. (kgf)	0.20 (0.09)	0.79 (0.36)	1.17 (0.53)	2.40 (1.09)	2.54 (1.15)
Accessory (standard) Bowl guard	—	●	●	●	●

**Accessories (Optional)**

Type	Part No.				
	NAW1000	NAW2000	NAW3000	NAW4000	NAW4000-06
Bracket	B120	B220	B320	B420	B420
Pressure Gauge	G27-P10-R1	K40A-MP1.0-N01M	K50A-MP1.0-N02M		
*Float Auto Drain	N.O.	—	NAD43	NAD44	NAD44
	N.C.	—	NAD53	NAD54	NAD54
Differential Pressure Drain	NAD61	NAD62-0	—	—	—

\* Min. operating pressure: N.O. - 15psig, N.C. - 22psig

## Setting

- 1 The adjustment knob is a locking type. Pull the knob away from the body until the orange band is visible. Adjust as necessary and push the knob back into its locked position to prevent accidental setting change.



- 2 Clockwise rotation of the knob results in a pressure increase and vice-versa.
- 3 Check supply pressure before adjusting pressure.

## Precautions

### <Installation>

- 1 Air flush piping before installation.
- 2 Use of the piping adaptors will ease installation.

### <Atmosphere>

Polycarbonate bowls may be damaged and possibly fail if exposed to synthetic oils, thinner solvents, trichlorethylene, kerosene and other aromatic hydrocarbons. If used in above atmosphere, please use a metal bowl.

### <Auto Drain>

#### Float type (Normally open)

- 1 Drain line should be 5/16 in. (8mm) or more and should be less than 16.5 ft. (5m). Be sure not to have any upward turns in the drain line which would prevent drainage.
- 2 Unsuitable for flow below 3.5 scfm(100N/min).
- 3 Min. operating pressure 15 psig (0.1 MPa).

#### Float type (Normally closed)

- 1 Suitable for a compressor with capacity lower than 0.75kw.
- 2 Min. operating pressure 22 psig (0.15 MPa).
- 3 Drain piping should be 5/32 in. (4mm) or greater and also less than 16.5 ft. (5m) in length.
- 4 Install vertically.

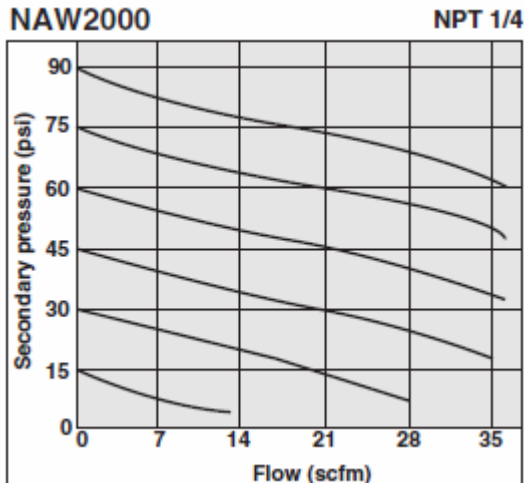
#### Differential type

- 1 Min. operating pressure 15 psig (0.1 MPa). Soft nylon tube of more than 3/32 in. (2.5mm) is recommended for drain piping. The overall length should be less than 16.5 ft. (5m). Be sure not to have any upward turns in the piping.
- 2 Install vertically.

#### Maintenance

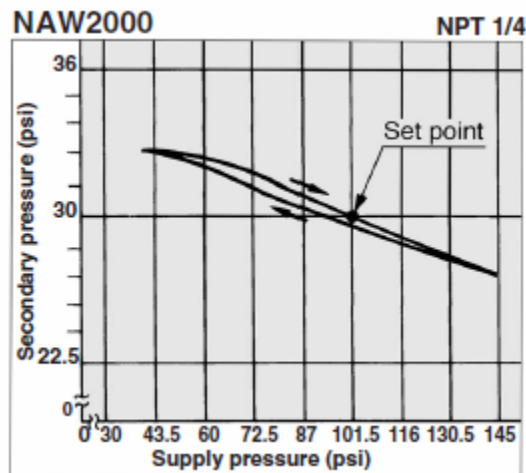
Filter element to be changed after 1 year or when a pressure drop of 15 psi (0.1 MPa) is reached.

## Flow Characteristics

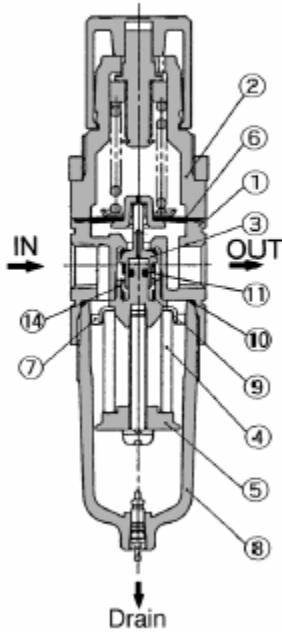


## Pressure Characteristics

Conditions—100psi Supply Pressure, 30psi Set Pressure, .71SCFM Flow Rate



**NAW2000**



**Main Parts**

No.	Name	Material			Note
		NAW1000• 2000	NAW3000	NAW4000• 4000-N06	
①	Body	Zinc die casting	Aluminum die casting		Platinum silver painting
②	Bonnet	Polyacetal		Aluminum die casting	Black painting

**Component Parts List**

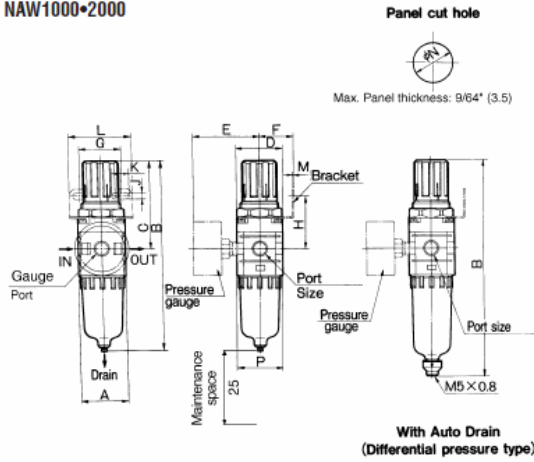
	Name	Material	Part No.				
			NAW1000	NAW2000	NAW3000	NAW4000	NAW4000-N06
③	Valve Ass'y	Brass ¥ NBR	134819	1349160	1315216A	1316212A	1316213A
④	Filter Element	Polyolefin	111344	1129116	111585	1116103	1116103
⑤	Baffle	( ) mat'l	111312 (POM)	11295 (ABS)	1315541 (POM)	1316276 (POM)	1316276 (POM)
⑥	Diaphragm Ass'y	NBR		131445A	1315215A	1316211A	1316211A
⑦	Deflector	ABS	11133A	112961A			
⑧	Bowl Ass'y	Polycarbonate	NC100F	NC200F-C	NC300F	NC400F	NC400F
⑨	Valve Spring	Stainless Steel	134824	1349158	131525	131625	131625
⑩	Bowl O-ring	NBR	111325	11297	111512	111636	111636
⑪	Valve O-ring	NBR		1349247	131544	131645	131645
⑫	Piston/Seal Ass'y	NBR	MYN-10A				
⑬	O-ring	NBR			P5	P5	P5
⑭	Valve guide	( ) mat'l		134132 (ZDC)	1315540 (POM)	1316275 (POM)	1316275 (POM)

# NAW Series

# Modular Air Components

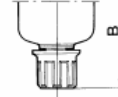
## Dimensions

NAW1000•2000

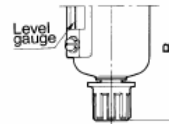


## Semi-standard Type/Dimensions

### Metal Bowl



### Metal bowl with level gauge



Model	Metal bowl	Metal bowl with level gauge
	B	B
NAW1000	4.31 (109.5)	—
NAW2000	6.48 (164.5)	—
NAW3000	8.68 (220.5)	9.47 (240.5)
NAW4000	10.71 (272)	11.50 (292)
NAW4000-N06	10.89 (276.5)	11.67 (296.5)

Model	Port Size	A	B	C	D	E	With Bracket							N	P	With auto drain	
							F	G	H	J	K	L	M			Float	Differential pressure
							B	B									
NAW1000	10-32 Nom. (M5)	.98 (25)	4.31 (109.5)	1.99 (50.5)	.98 (25)	1.02 (26)	.98 (25)	1.10 (28)	1.18 (30)	.18 (4.5)	.26 (6.5)	1.57 (40)	.08 (2.0)	.81 (20.5)	1.10 (28)	—	5.12 (130)
NAW2000	1/8 • 1/4	1.57 (40)	6.48 (164.5)	3.07 (78)	1.57 (40)	2.24 (56.8)	1.18 (30)	1.34 (34)	1.73 (44)	.21 (5.4)	.61 (15.4)	2.17 (55)	.09 (2.3)	1.32 (33.5)	1.57 (40)	—	7.38 (187.5)
NAW3000	1/4 • 3/8	2.09 (53)	8.17 (207.5)	3.64 (92.5)	2.09 (53)	2.39 (60.8)	1.61 (41)	1.57 (40)	1.81 (46)	.26 (6.5)	.31 (8.0)	2.09 (53)	.09 (2.3)	1.67 (42.5)	2.20 (56)	9.78 (248.5)	—
NAW4000	1/4 • 3/8 • 1/2	2.76 (70)	10.20 (259)	4.41 (112)	2.76 (70)	2.78 (70.5)	1.97 (50)	2.13 (54)	2.13 (54)	.33 (8.5)	.41 (10.5)	2.76 (70)	.09 (2.3)	2.07 (52.5)	2.87 (73)	11.81 (300)	—
NAW4000-N06	3/4	2.95 (75)	10.35 (263)	4.49 (114)	2.76 (70)	2.78 (70.5)	1.97 (50)	2.13 (54)	2.20 (56)	.33 (8.5)	.41 (10.5)	2.76 (70)	.09 (2.3)	2.07 (52.5)	2.87 (73)	11.97 (304)	—